



Allergy Test

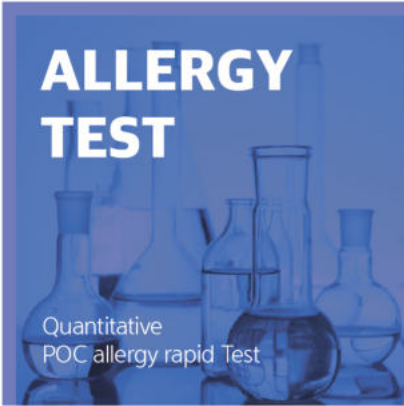
- Total IgE
- Allergy-3

ADTech Co., LTD

에이디텍 주식회사

TOTAL IVD SOLUTION PROVIDER

NOVEL IMMUNOASSAY



Total IgE Allergy-3

- ✓ Easy Allergy diagnosis in 15-20 min. can diagnose dogs, cats and house dust mites allergens which make up 60% of allergy diseases.

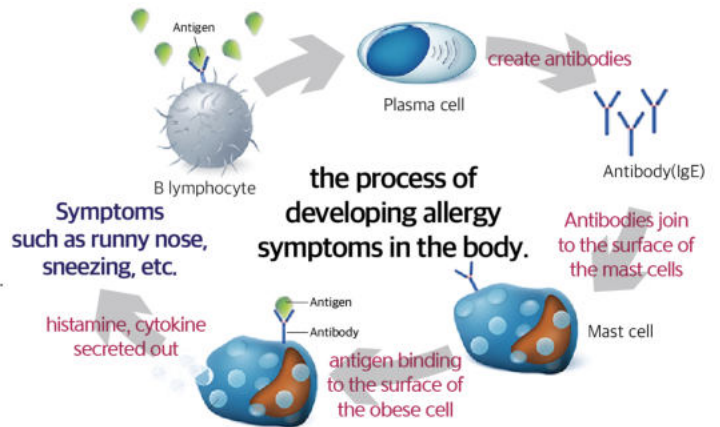


Cause of Allergic reaction

Allergic diseases are immunological reactions that cause hypersensitivity to a specific causative agent, and are known as multiple diseases that coincide with atopic dermatitis, asthma and allergic rhinitis, rather than a single disease. Allergic diseases are known to be caused by a combination of various factors, including genetic and environmental factors. Matters that causes allergy is called Allergens, and pollen, mites, molds, pet dander and fungi are the typical allergens.

Expression process of Allergic reaction

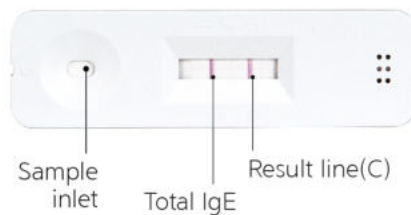
- 1) When allergens invade our bodies, immunoglobulin E(IgE) is produced.
- 2) IGE binds to surface receptors in Mast cells.
- 3) Mast cells are activated to induce secretion of allergens such as histamine and inflammatory cytokines causing allergic reactions.



Product information

Total IgE RAPID KIT

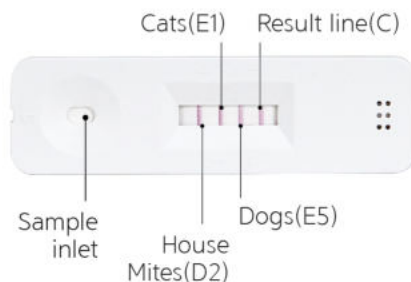
- Usage for local hospital and clinics
- Model : C 0429
- Package : 20 tests@kit
- Storage : Room temperature (4°C~30°C)
- UExpiry date: 2 years from manufactured



Test item: Total IgE
 Sample: serum or Plasma
 Analyzing time: 15 min
 Test range: 35-3,000 IU/mL

Allergy-3 RAPID KIT

- Usage of local hospital and clinics
- Model : C 0420
- Package : 20 tests@kit
- Storage : Room temperature (4°C~30°C)
- Expiry date: 2 years from manufactured



Target item: House dust mite, cat and dog
 Sample: serum or Plasma
 Analyzing time: 20 min
 Test range: 1-100IU/mL

* Certification : KFDA(Korea)
 #JEIN 19-4344 / #JEIN-19-4960

Allergy-3 Rapid Kit Result

	Allergy-3	Total IgE
Positive reaction to Allergy House mites		
Positive reaction to Allergy Cat		
Positive reaction to Allergy Dog		
Positive reaction to Allergy Med. Exam required		
Negative reaction to Allergy		

Negative if total IgE is less than 100 IU/ml

Total IgE Result determination by concentration

IU/ml	Result
0 - 100	Negative
> 100	Positive

Specific IgE - Interpretation

Specific IgE concentration kUa/L	Specific IgE Grade	Level of Allergen Specific IgE Antibody
100+	6 - strong positive	Very high. Refer to patient history
52.5+	52.5+ - strong positive	Very high. Refer to patient history
17.5+	17.5+ - strong positive	Very high. Refer to patient history
3.5+	3.5+ - positive	High Grades 1-3 vary in significance dependant on allergen. Consider patient history and risk of severe reaction/anaphylaxis
0.7+	0.7+ - positive	Moderate
0.35+	0.35+ - low, weak positive	Low Grade 1 to inhaled allergens is of doubtful significance. Grade 1 to foods of moulds of greater significance
<0.35	<0.35 - negative	Absent

How to Use Total IgE & Allergy-3 Rapid Kit

Pre-Use Readiness

- **Serum sample**
The collected blood is put into a tube to which coagulant is added or anticoagulant is not added and collect supernatant after centrifuge by 3,000 rpm for 10 minutes.
- **Plasma sample**
The collected blood is put into a tube containing anticoagulant, centrifuged by 3,000 rpm for 10 minutes and collect the supernatant.
- **In case the collected samples (blood serum, plasma) and the deployment fluid are refrigerated**
Leave at room temperature 30 minutes before starting the examination and shake gently to use.

- 1 Open the aluminum pouch, remove the inspection device and place it on a flat surface.
- 2 After sucking the sample with the enclosed disposable dropper, drop 1 drop into the sample filler.
- 3 Drop 3 drops of the deployable solution into the sample injection port.
- 4 After starting the examination, wait 15 minutes for total IgE and 20 minutes for allergy-3.
- 5 Press the test button after running the instrument, and place the inspection device on the stand.
- 6 Enter the patient ID and user ID, and then press the Start button.
- 7 Read the QR code on the top part of the device for inspection and push in the insert.
- 8 Select the type of sample that you responded to and close the device insert to start reading.
- 9 After reading, check the analysis results displayed on the screen. If necessary, print and save the inspection results by pressing the print and USB buttons located at the bottom of the result screen.



ADTECH

에이디텍은

최첨단 진단 바이오칩을 개발하여
인류의 행복과 무병 장수의
꿈을 실현하기 위하여 노력하고 있습니다.



에이디텍(주) ADTech Co., LTD

Tel. +82 31 8055 8041

Fax. +82 31 8055 8047

Email. adtchip@gmail.com

#A-3101, Gunpo IT Valley, Gosan-ro 148beon-gil 17,
Gunpo-si, Gyeonggi-do, South Korea

www.adtchip.com

